

# Sampling and Acceptance Report

Inspection Information			
Category Inspection	Sampling and Acceptance Of 4 Energy Meters and 1 Modem for Type Test		
Inspection Content	<p>A - On - site at the factory, confirm the quantity of finished products and mark the selected samples (for tests in China) with unique serial numbers.</p> <p>B - Select samples and components to be sent to Iran for testing and label them with unique serial numbers.</p> <p>C - At the laboratory, conduct an acceptance inspection of the samples together with laboratory staff, confirm that the samples and labels remain unchanged.</p>		
Manufacturer Name and Location (For Sampling)	Wasion Group Co., Ltd. No.468 Tongzipo Road, High Technology Industrial Development Zone, Changsha, Hunan, P.R.China		
Laboratory Name and Address (For Sample Acceptance and Subsequen Tests)	Zhejiang Fangyuan Test Group Co., Ltd. No.400, Guangqiong Road, Jiaxing, Zhejiang, China		
Inspection Result	<input checked="" type="checkbox"/> Satisfactory <input type="checkbox"/> Conditionally Accepted <input type="checkbox"/> Rejected <input type="checkbox"/> Pending		
Inspection Institution	EPIL China Branch		
Sampling Date	2026-04-22	Sample Acceptance Date	2026-04-27

Issued Date: 2026-04-28

Inspector Name: Kai Feng

Signature: 冯凯

A- Sampling for Type Tests in China

Finished Product Area



Single Phase DC Meter Model: GT100



Three Phase DC Meter Model: GT300



Single Phase Terminal Type Meter: ST100



Single Phase DIN Rail Meter Model: DT100



DIN Rail Gateway Device Model: GW200



Please see attachment A- Comparison of Barcode and Lable Number for China Lab

B- Sampling for Tests in Iran

Single Phase DC Meter Model: GT100



Three Phase DC Meter Model: GT300



Single Phase Terminal Type Meter: ST100



Single Phase DIN Rail Meter Model: DT100



DIN Rail Gateway Device Model: GW200



Parts Accompanying Each Meter (17 small bags)



Relay (4 small bags)



On-Site Disassembly Of The Relay



**Each product has 8 pcs selected (seamless / openable) for the following tests**

- c) Polycarbonate seamless samples (Iranian laboratory)
  - Number: 6 pieces
- d) Openable sample (Iranian laboratory)
  - Number: 1 piece
- e) 1 meter for RS485 test (meeting the requirements of this test)

Please see attachment **B- Comparison of Barcode and Lable Number for Iran Lab**

**C- Records of Sample Acceptance at The Laboratory**

Laboratory Door



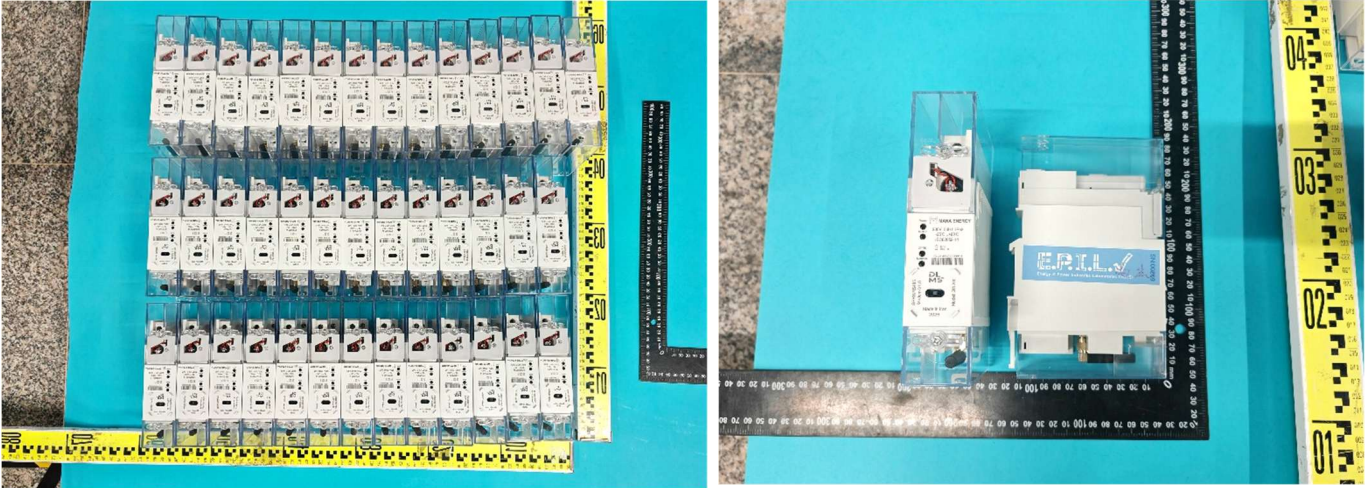
Whole Pallet (total 1 pallet)



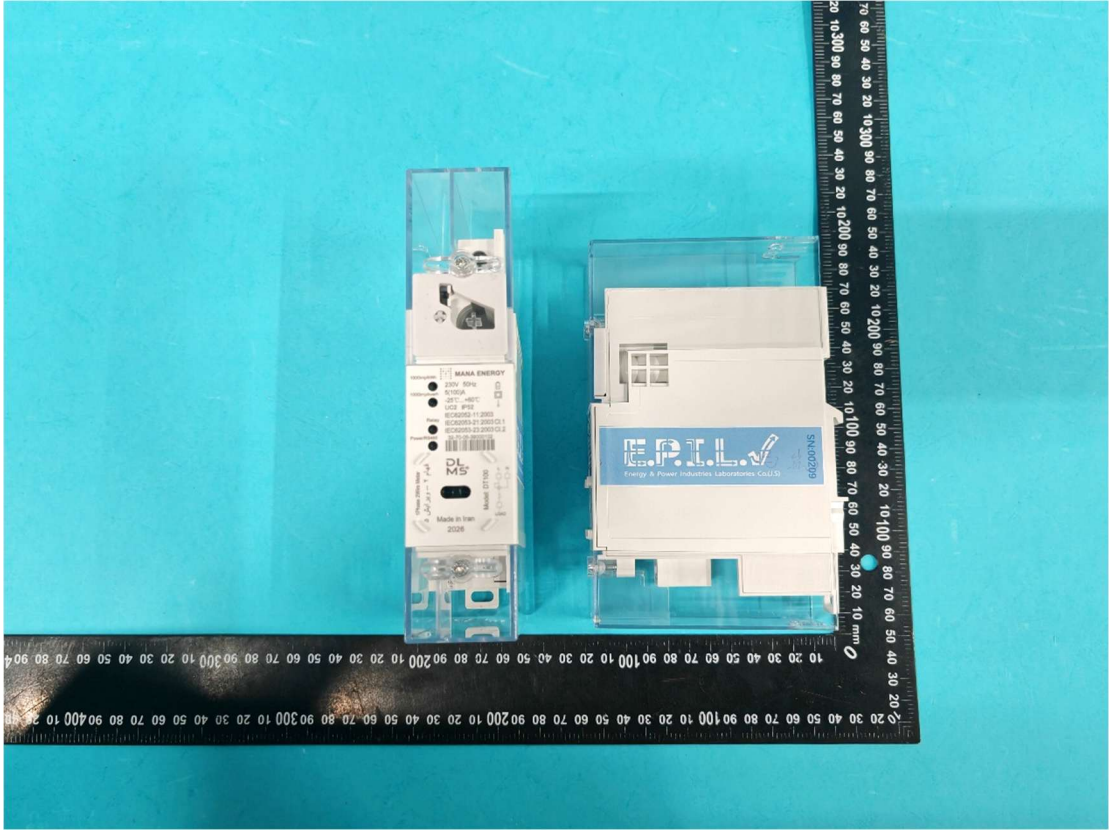
Sample Unpacking Acceptance



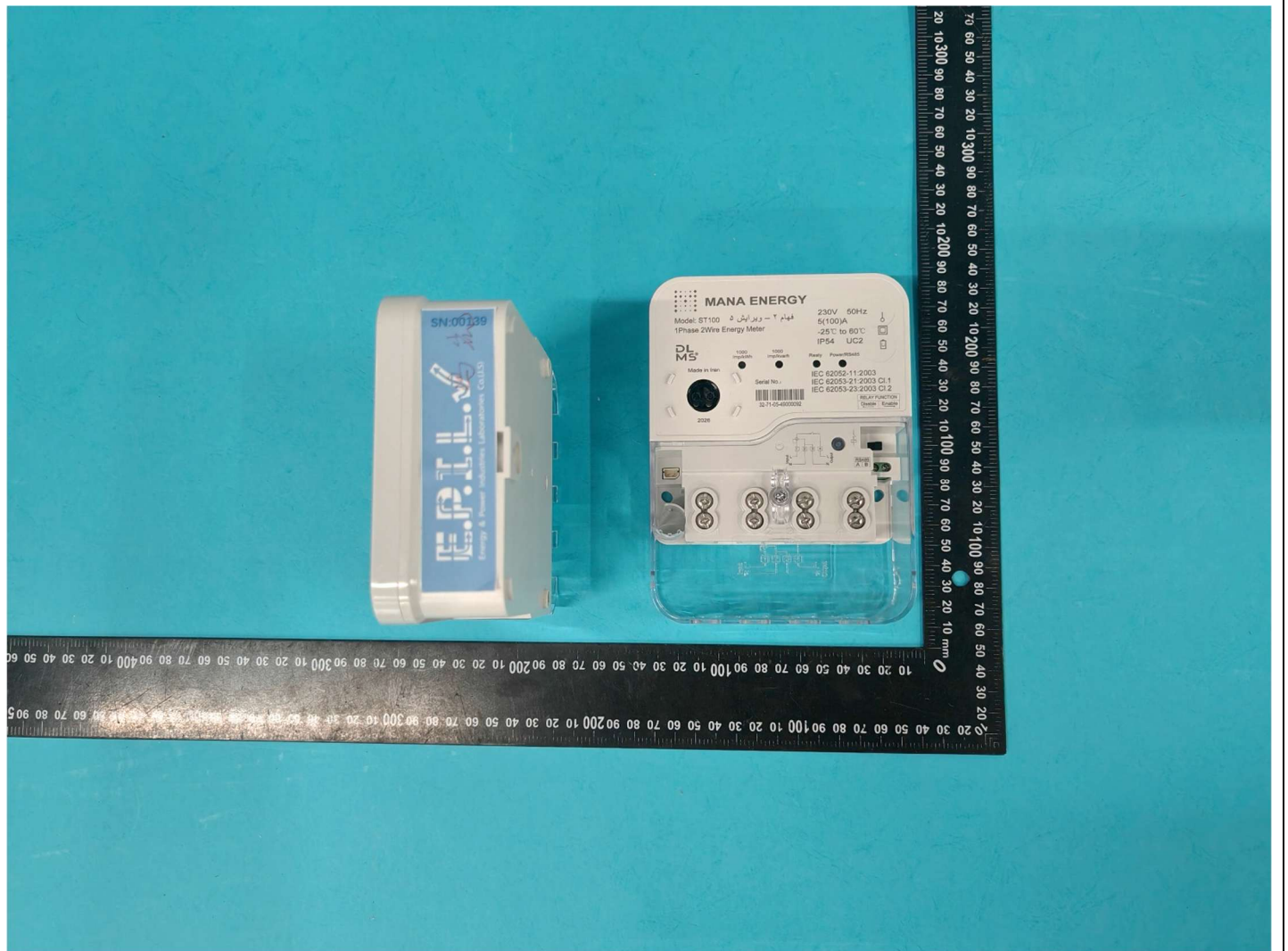
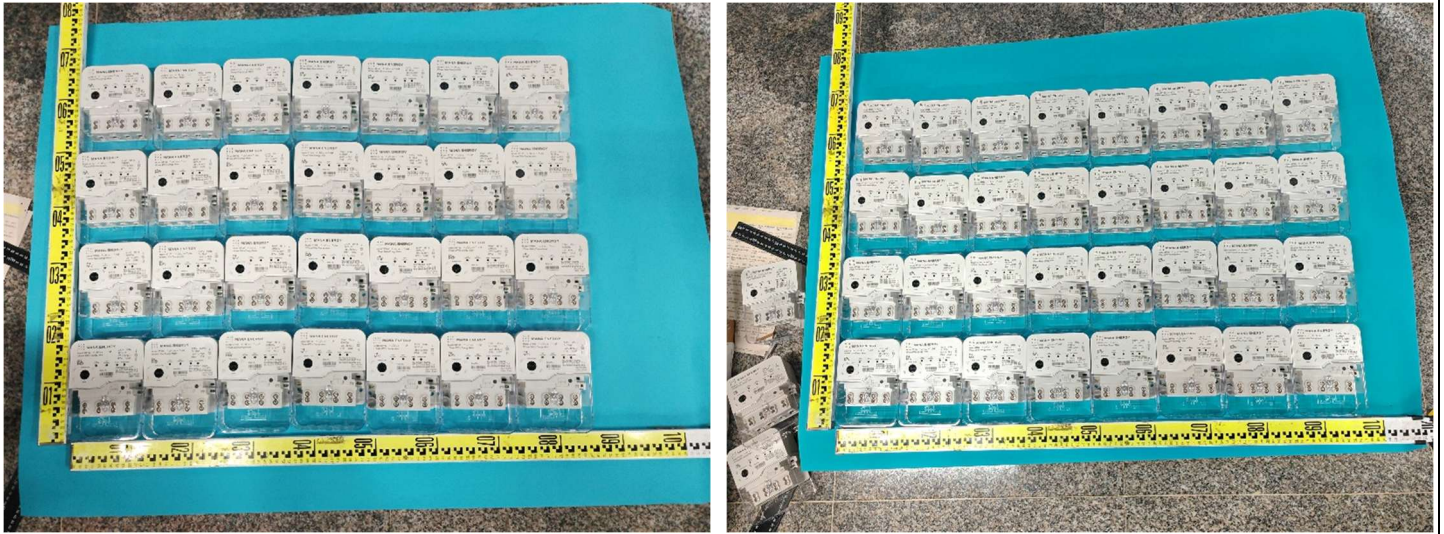
DIN Rail Gateway Device Model: GW200



Single Phase DIN Rail Meter Model: DT100



Single Phase Terminal Type Meter: ST100



Single Phase DC Meter Model: GT100



Three Phase DC Meter Model: GT300







Conclusion of Sample Acceptance: The product models, quantities, barcodes and label numbers match those sampled at the factory, the samples passed the acceptance inspection.